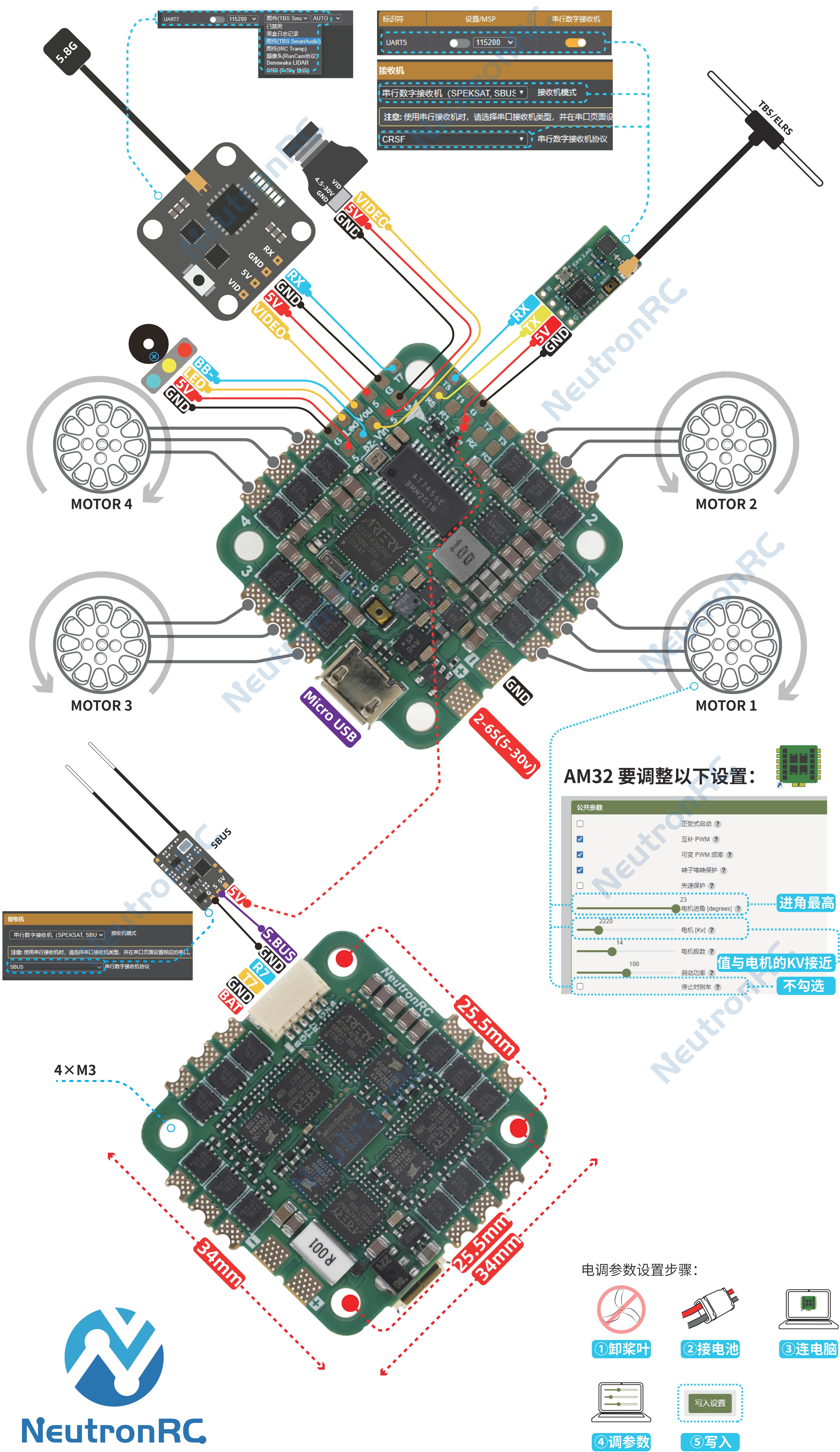


NeutronRC AT32F435 Mini AIO

ATbetaflight 是 Betaflight 的分支, 它是一个基于 Betaflight 的开源飞控固件, 并由 FlightNG 团队添加了对 AT32 芯片的支持。

技术文档: <https://flightng.com/atbetaflight/>

AM32 电调固件: <https://github.com/AlkaMotors/AM32-MultiRotor-ESC-firmware>



AM32 要调整以下设置:

The screenshot shows the Betaflight configuration interface for the AM32. The following settings are highlighted:

- 公共参数 (Common Parameters):**
 - 正式启动 (Formal Start):
 - 互补 PWM (Complementary PWM):
 - 可变 PWM 频率 (Variable PWM Frequency):
 - 转子堵转保护 (Rotor Stall Protection):
 - 失速保护 (Stall Protection):
 - 电机进角 [degrees] (Motor Advance [degrees]): 23 (进角最高)
 - 电机 [KV] (Motor [KV]): 2220 (值与电机的KV接近)
 - 电机极数 (Motor Poles): 14 (值与电机的KV接近)
 - 启动功率 (Start Power): 100 (值与电机的KV接近)
 - 停止时刹车 (Brake when Stop): (不勾选)

电调参数设置步骤:

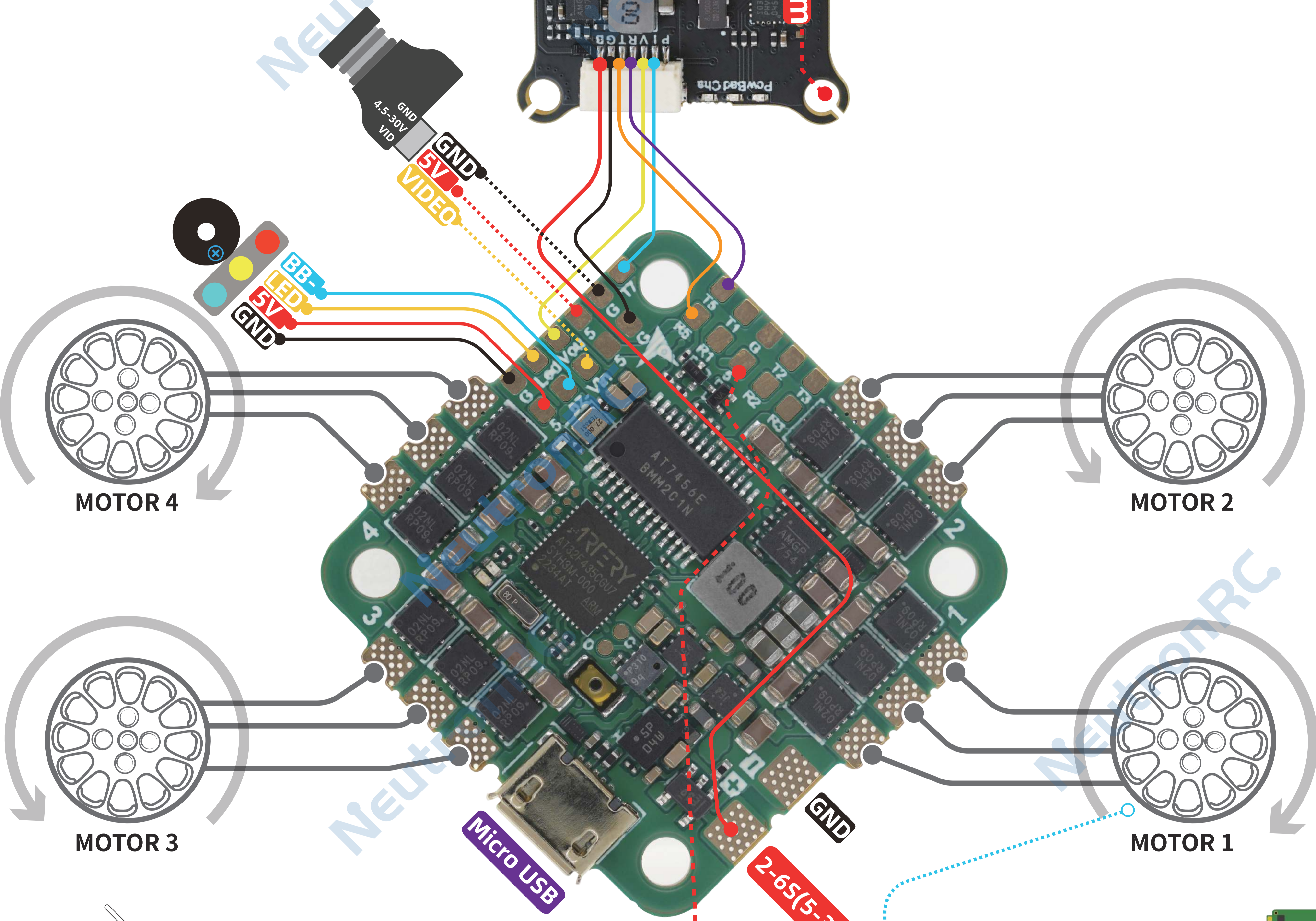
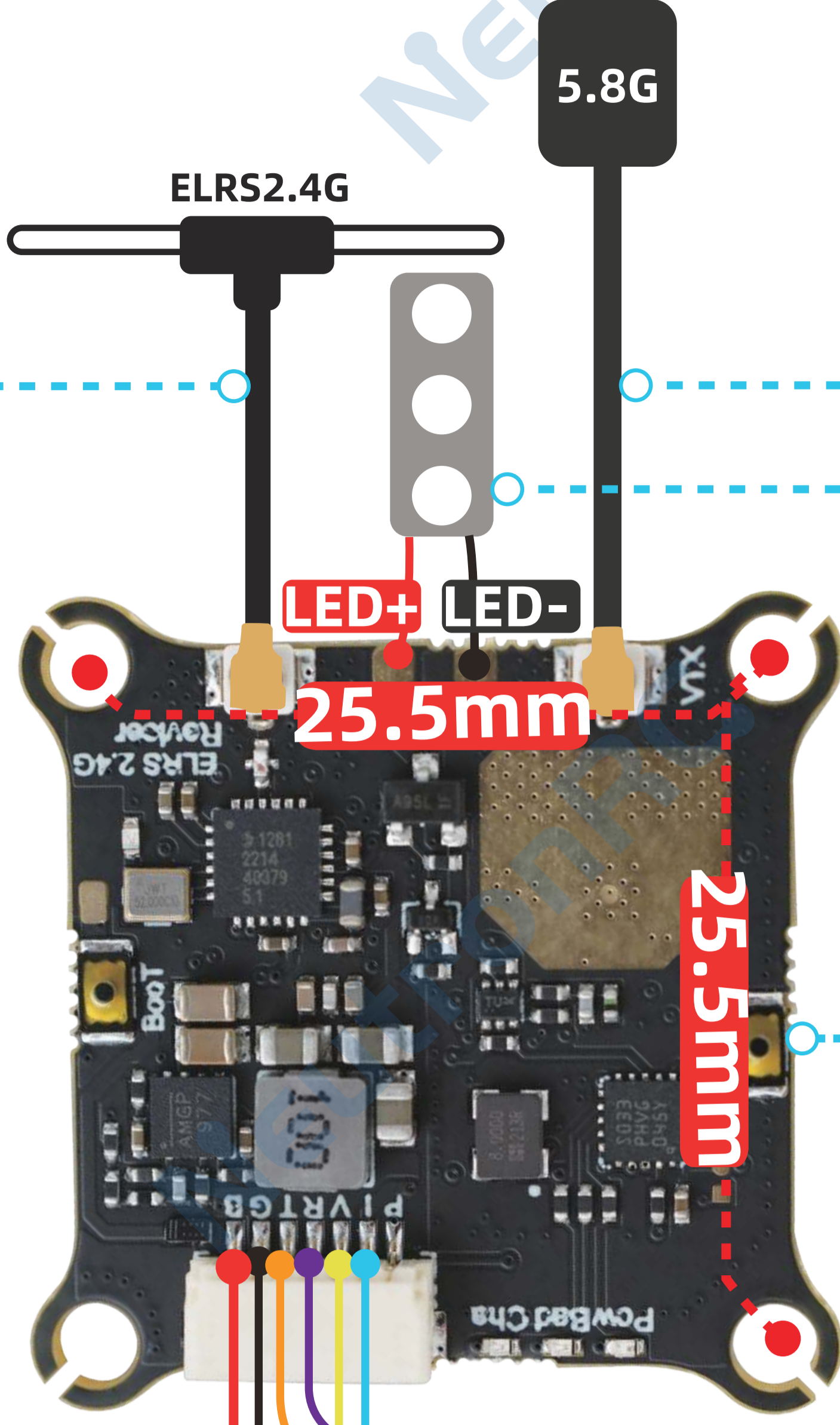
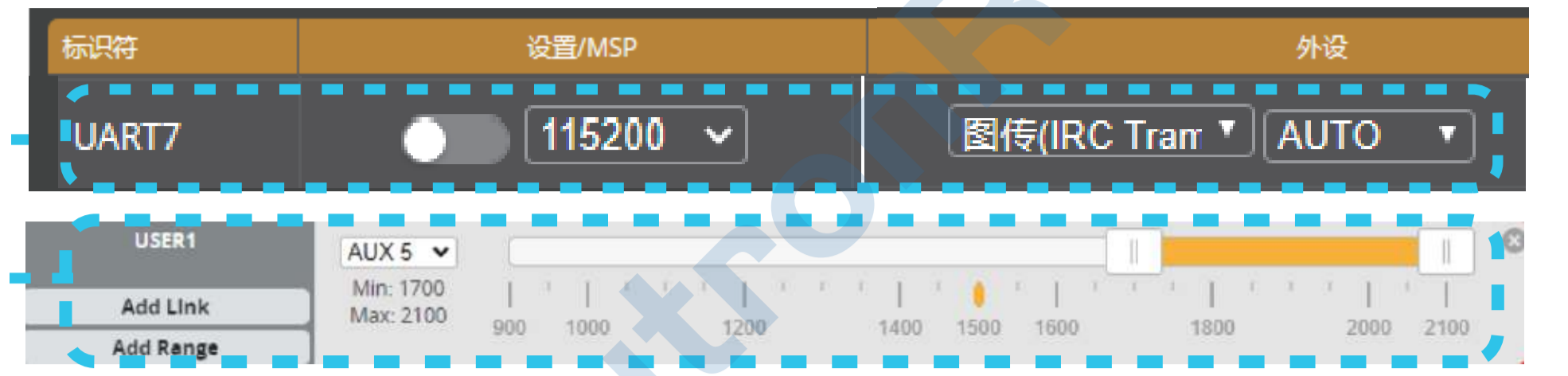
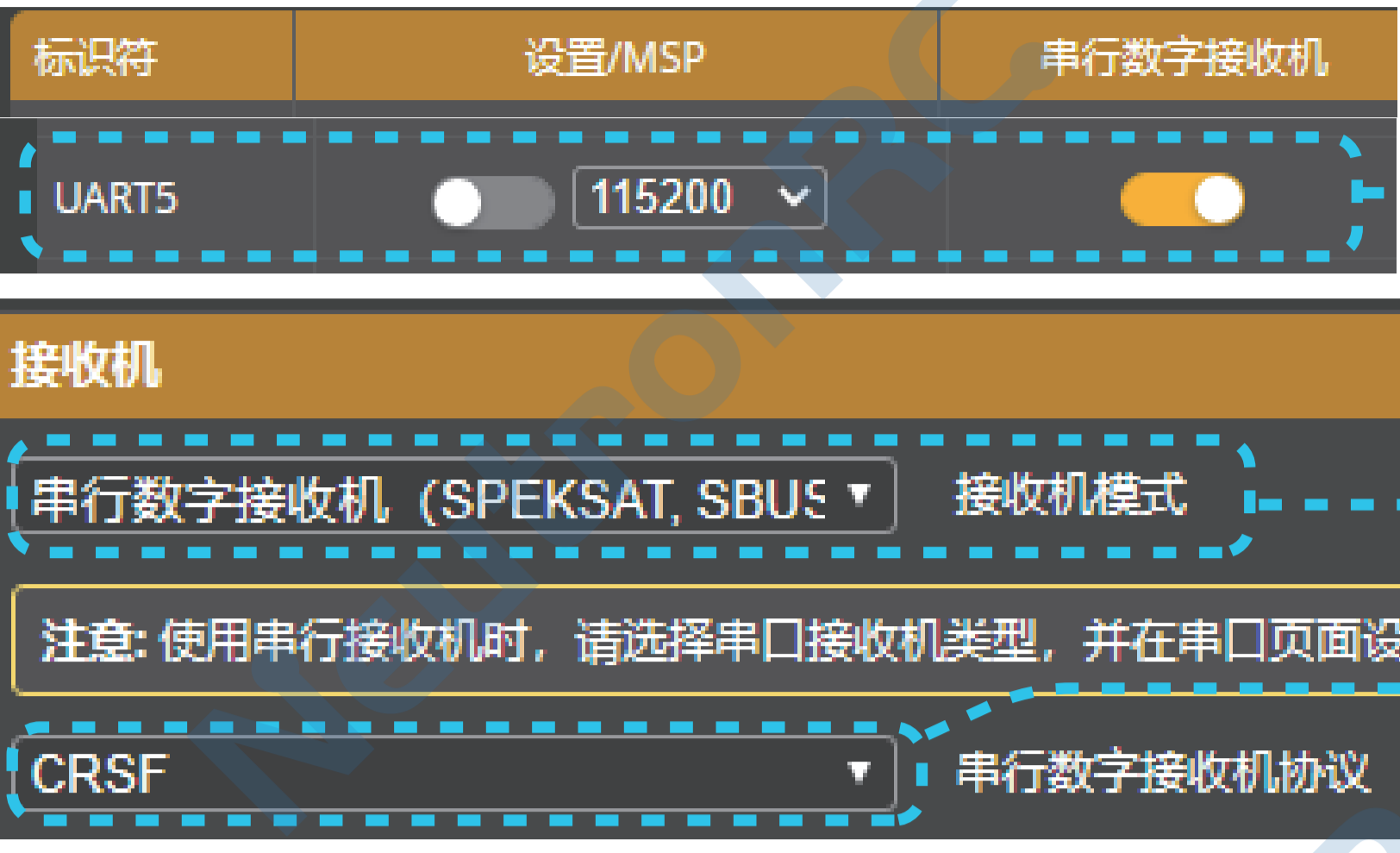
- ① 卸桨叶
- ② 接电池
- ③ 连电脑
- ④ 调参数
- ⑤ 写入

NeutronRC AT32F435 Mini AIO

ATbetaflight 是 Betaflight 的分支, 它是一个基于 Betaflight 的开源飞控固件, 并由 FlightNG 团队添加了对 AT32 芯片的支持。

技术文档: <https://flightng.com/atbetaflight/>

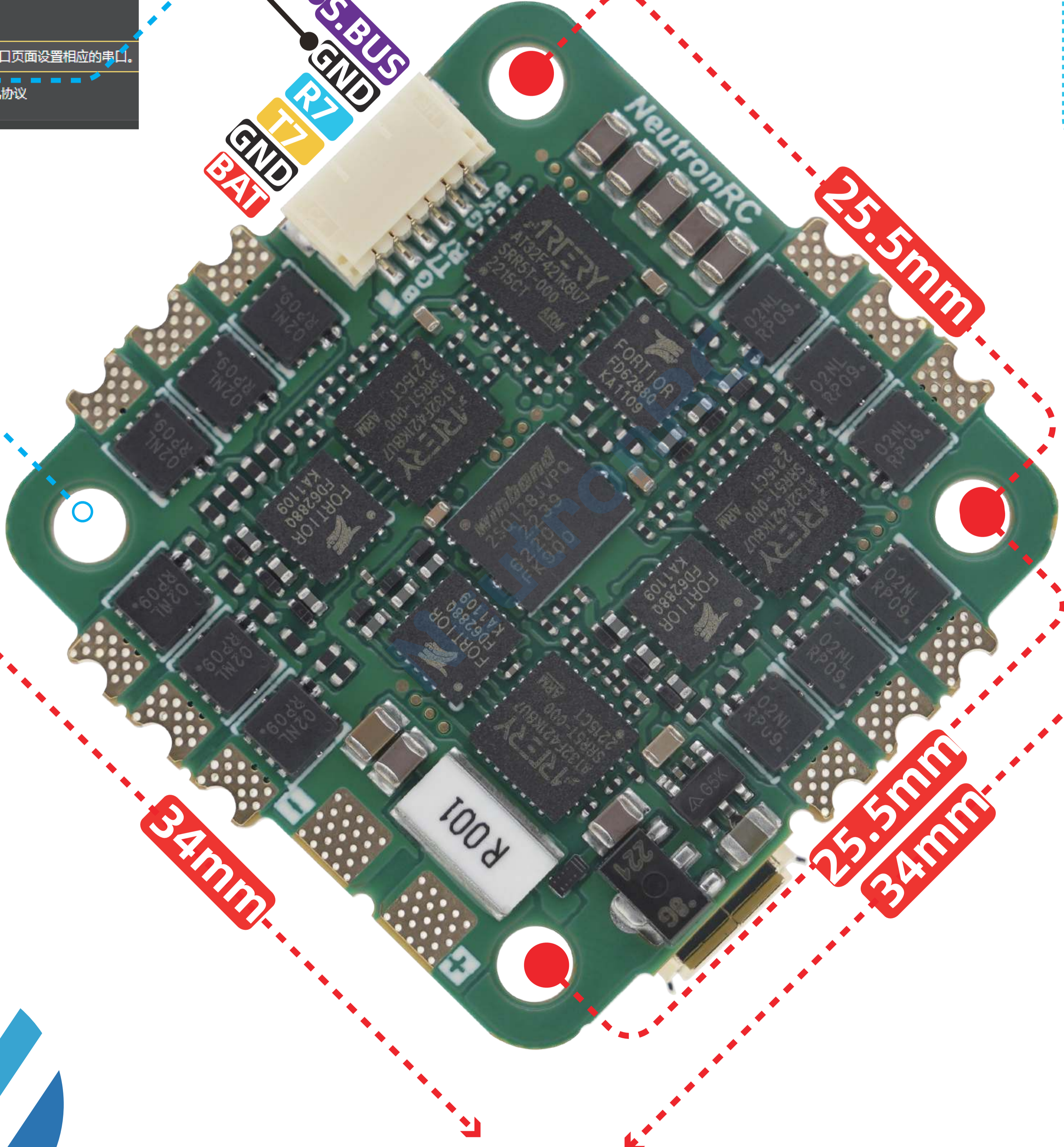
AM32电调固件: <https://github.com/AlkaMotors/AM32-MultiRotor-ESC-firmware>



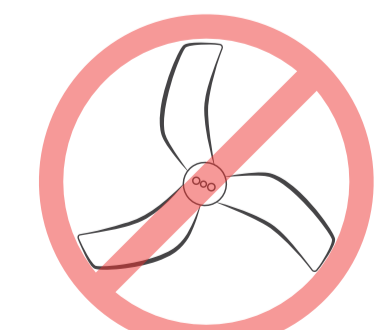
AM32 要调整以下设置:



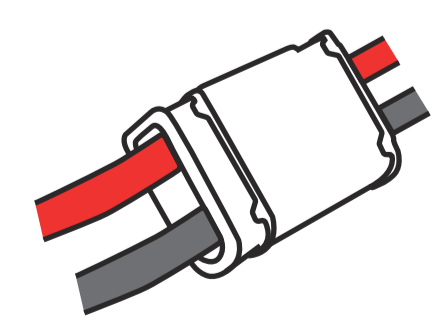
4 × M3



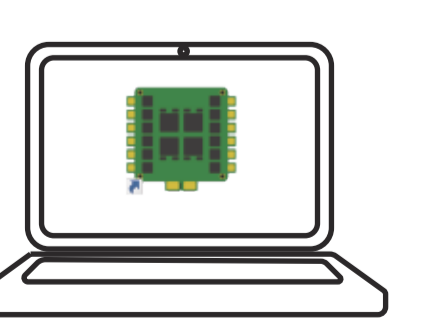
电调参数设置步骤:



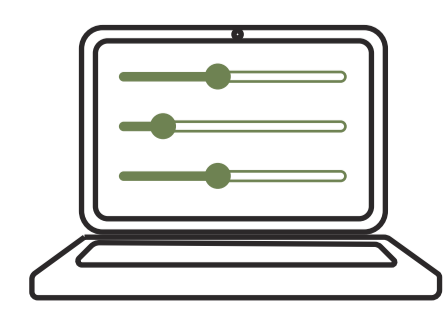
①卸桨叶



②接电池



③连电脑



④调参数



⑤写入

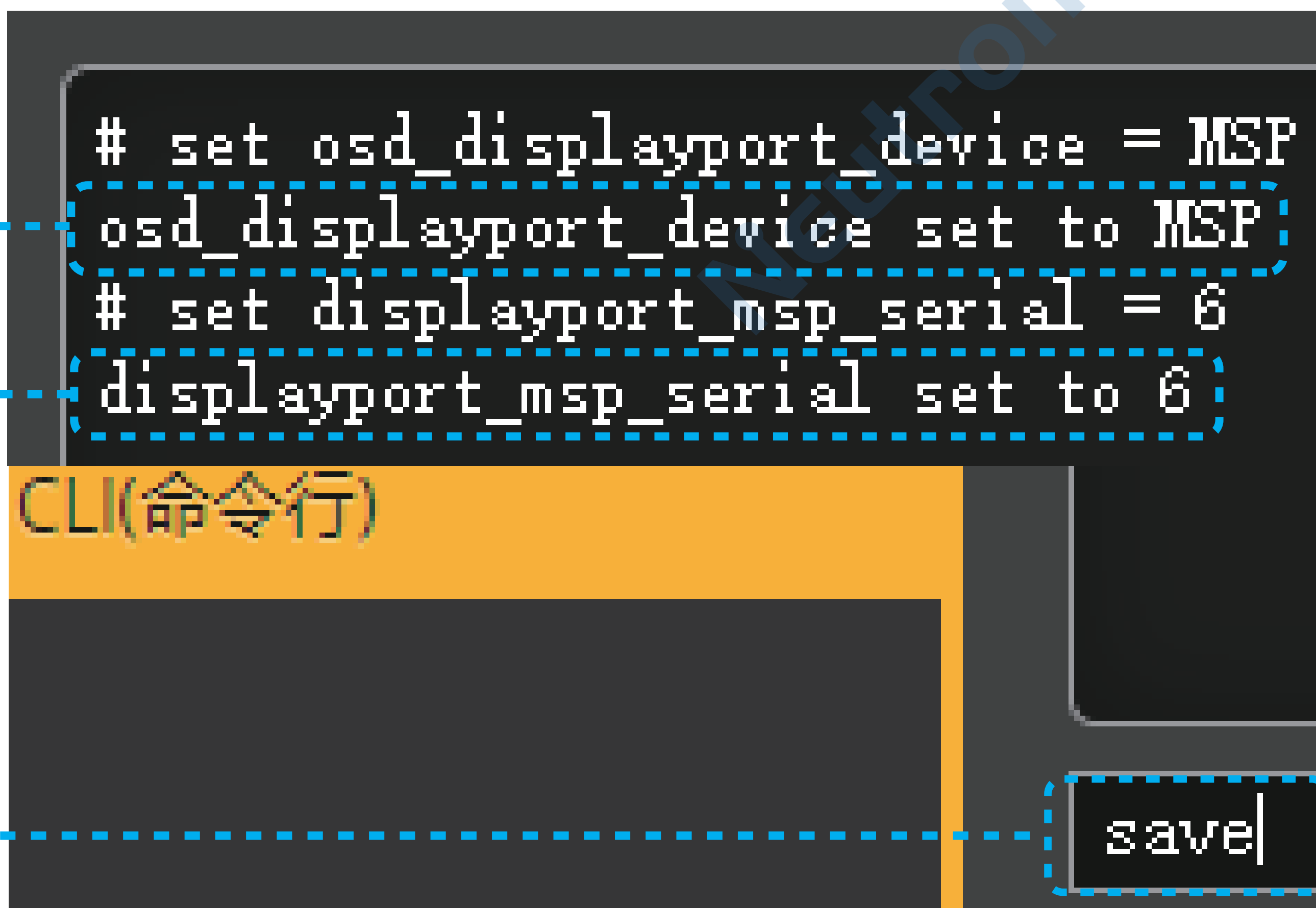


NeutronRC

NeutronRC AT32F435 Mini AIO与DJI天空端接线图

飞控连接电脑后, 请在CLI界面输入 DJI (Vista /O3) 高清图传命令 :

```
set osd_displayport_device = msp  
set displayport_msp_serial = 6  
save
```



 请注意严格按照接线图连接天空端, 否则会造成天空端烧毁等严重后果。

